

Terri's Yarns & Crafts

927 Dolly Parton Parkway, Sevierville, TN 37862

865-453-7756

9 am - 5:30 pm Mon - Sat

email: ava@terrisyarnsandcrafts.com

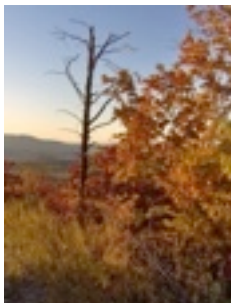
online store: www.terrisyarnsandcrafts.com

NOTES FROM AVA

It's that time of year again! The leaves are changing colors, pumpkins are being carved, and the morning air is nippy. Don't you just love fall in East Tennessee?

It's also time to get into high gear for making those holiday gifts and decorations. We have plenty of yarn, beads, ribbon, and paint for you. Just about anything you need for your projects. Let your imagination go!

Happy Crafting!



Fall Foliage in the Great Smoky Mountains National Park

Class Schedule



Beginning Crochet

Thursdays **October 18, 25, November 1, 8** **7:00 pm**
Learn to crochet. You'll make dish cloths, pot holders, an ornament, & more as you practice the stitches. **Cost: \$55.00 (includes all materials)**

Intro To Jewelry Making

Saturday **October 27** **2:00 pm**
Make a simple bracelet while you learn the basic jewelry technique. **Cost: \$15.00 (includes all materials)**

Intro To Embroidery

Saturday **November 10** **2:00 pm**
Make an easy ornament to hang on your tree or use as package decoration! You'll learn basics stitches. **Cost: \$18.00 (includes all materials)**

Advanced Knitting

October 2, 16, 30, November 6, 20, December 6, 20
7:00 pm **Cost: \$5.00 (plus materials if needed)**
We're working on a Christmas vest design.

Beyond Beginning Crochet

October 8, 22, November 5, 19 **7:00 pm** **Cost: \$5.00 (plus materials if needed)**
As we finish up the afghans that we've been working on, we'll be moving into hats, scarves, and mittens for winter and gift giving.

Fall Wreath

Bring the colors of fall inside as you make a decoration for your door, window, or table top!



Materials:

4 1/2" x 5 3/4" x 1/8" oval wooden frame by Darice
2 yards of #40 orange FloraSatin ribbon
2 yards of #40 rust FloraSatin ribbon
3 sunflower floral picks
6 fall leaf picks
1 yard of 24 gauge wire
1/2" straight pin
3 berry or nut clusters
Aleene's Designer Tacky glue
scissors
wire cutters
popsicle stick
needle-nose pliers

Finished Size: 10" diameter

Skill Level: easy

Dates to Remember

- * October 8 Columbus Day
- * October 16 National Boss Day
- * October 24 United Nations Day
- * October 31 Halloween
- * November 4 End of Daylight Saving Time
- * November 6 Election Day
- * November 11 Veteran's Day
- * November 22 Thanksgiving Day
- * December 9 Hanukkah
- * December 21 Winter begins
- * December 25 Christmas Day
- * January 1, 2013 New Year's Day

Instructions:

1. Cut the ribbon lengthwise.
2. Wrap the frame with one piece of the orange ribbon, overlapping the edges about 1/3 of the width. Dip the pin into the glue and stick it into the ribbon to secure the end.
3. Take any tags off of the picks. Arrange the leaves so that the ribs all face in one direction. Push the leaves toward one end of the pick and trim the end of the pick to about 1 1/2".
4. Dip the end of one leaf pick in glue. Stick the end of the pick under a wrap of the ribbon. Continue with the rest of the leaves, alternating colors. Leave about 3" of the wreath frame uncovered on the upper right side.
5. Trim the sunflower and berry or nut picks to 1 1/2". Dip the ends in glue and scatter them around the wreath, tucking the ends under the ribbon wraps as before.
6. Tie a 4" puffy bow holding the orange and rust ribbons together. Use 15" of wire to fasten the bow. Wrap the wire ends around the wreath in the space left uncovered by the leaf picks.
7. Wrap the remaining wire around the form. Twist it to tighten it against the form. Twist the ends together, leaving a loop for hanging.

©2011 Ava Lynne Green
927 Dolly Parton Parkway, Sevierville, Tn 37862
www.terrisyarnsandcrafts.com



Tip: Use the same technique with Christmas ribbon and flowers for a Christmas wreath!